

EAST MAMPRUSI MUNICIPAL DISTRICT MULTIDIMENSIONAL POVERTY FACT SHEET

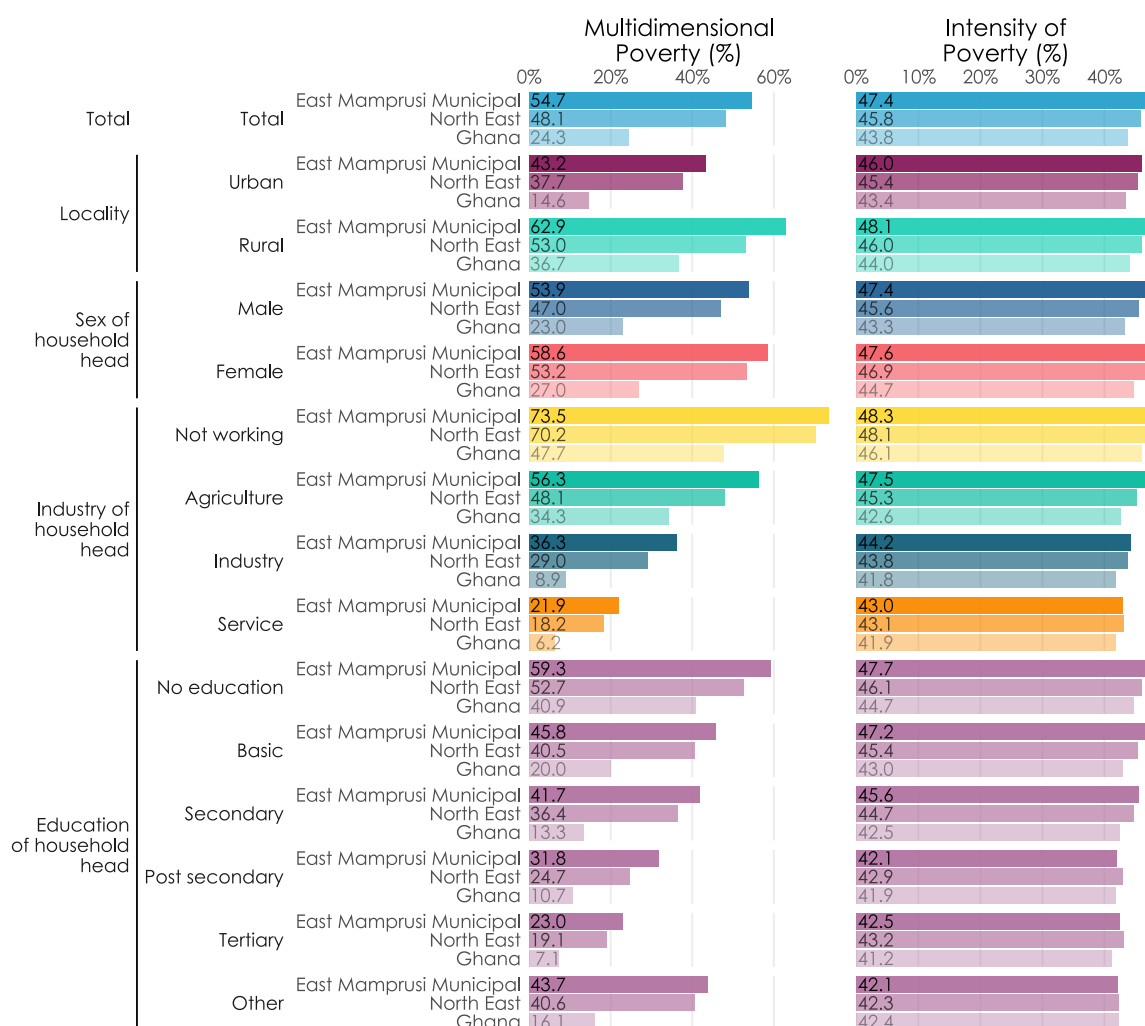


Summary

- This fact sheet summarizes the multidimensional poverty statistics for East Mamprusi Municipal, based on the 2021 PHC. It shows the incidence (*who is poor?*), intensity (*how poor are the poor?*), deprivation in 13 indicators (*what are people in the district lacking?*), and the contribution to multidimensional poverty (*how is poverty experienced?*). For information on multidimensional poverty and methodology, refer to: <https://statsghana.gov.gh/MPI-Primer.pdf>
- In East Mamprusi Municipal, 54.7 per cent of the population live in multidimensional poverty and the average intensity of poverty is 47.4 per cent. This means that in East Mamprusi Municipal the Multidimensional Poverty Index is estimated to be 0.259.
- East Mamprusi Municipal is placed 251st out of the 261 districts in terms of the percentage of population living in multidimensional poor households. Within the North East Region it is placed fifth out of six districts (*a lower number indicates less poverty*).
- East Mamprusi Municipal is most deprived in the areas of housing (92.3%), improved toilet facilities (90.5%), and drinking water (55.5%). For 10 out of 13 indicators, East Mamprusi Municipal had a higher deprivation than the national averages.

Incidence and Intensity

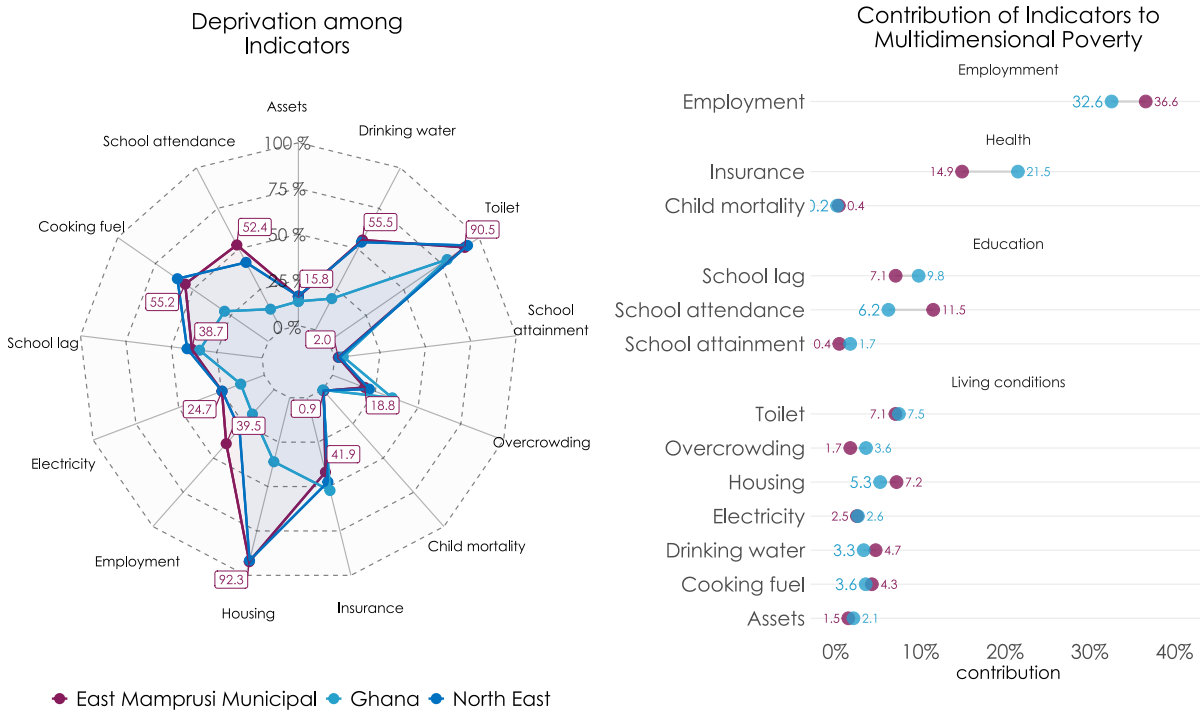
This plot shows the multidimensional poverty incidence and intensity for East Mamprusi Municipal and North East Region, as well as the national statistics. Additionally, data are disaggregated by locality type, and the sex, industry of employment, and education level of the household head.¹



¹In districts where there are no urban or no rural areas, no data is presented for that locality type

Deprivation and Contribution

The plot on the left shows the average uncensored deprivation (between 0% and 100%) of the 13 different indicators in East Mamprusi Municipal as compared to regional and national average. The plot on the right shows the contributions to multidimensional poverty (sums to 100%).



Multidimensional Poverty Hotspots

This map shows both the percentage of multidimensional poor people as well as the total number of multidimensional poor per 1000m by 1000m grid. Values are normalized, being relative to the district itself rather than to Ghana as a whole and areas without population are coloured grey.

